

**XEROX**<sup>®</sup>

Document Centre<sup>®</sup> 420/426

Technology | Document Management | Consulting Services

print | copy | scan | fax

# Meet the Office Machine that Gets Things Done.



# Do things better. Do more with less. Do things in innovative ways...with Document Centre 420/426



The Document Centre 420/426 multifunction device gives you the essential features you need - for less than you'd expect to pay. And since it's modular and fully upgradeable, you can easily add capabilities as your needs grow. Speaking of capability, Document Centre 420/426 is literally four great office tools in one, keeping productivity at its highest levels. The Document Centre 420/426 is the benchmark in office copiers. What else did you expect from the company that invented office copying?

**A PRINTER that keeps pace with your network.**

**Unparalleled functionality and flexibility in your networked environment.**

The SMart controller, one of the industry's fastest, delivers improved results through its high performance architecture. Office users will appreciate true Adobe PostScript® 3, which sets the standard for document quality and fidelity. This, combined with PCL6 emulation and direct support of TIFF and PDF document formats, creates a powerful and flexible printing system.

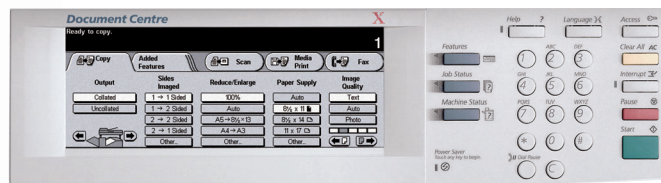
Xerox CentreWare® software provides easy-to-use graphical interfaces so you can take advantage of innovative print features such as Secure Print, Delayed Print or Sample Set.

**A COPIER that keeps pace with your office.**

**The essential features you need. Priced for every office.**

The simple, integrated control panel provides a large, easy to use graphical interface that makes quick work of even the most complex copier tasks.

Supports a wide range of print and copy paper sizes, from postcard to ledger; runs labels, envelopes and card stock effortlessly.



An easy to use touchscreen control panel provides convenient access to copy, scan, email and your job queue.

**A network SCANNER that shares work online.**

**Scan directly to network repositories and to your desktop.**

Xerox Document Centre is transforming office scanning the same way Xerox transformed office copying.

**A FAX machine that gets you connected.**

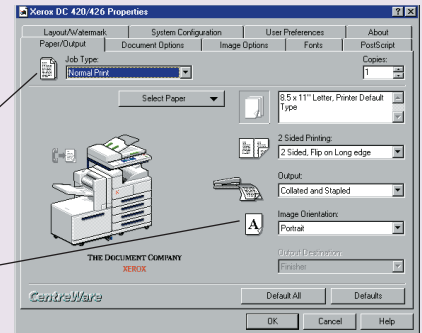
**Powerful fax device makes light work of your faxing needs.**

The ability to set up 30 password-protected mailboxes provides security and peace of mind.

*CentreWare print drivers have clear graphical user interfaces that make it easy to select all printer features.*

*Icons clearly depict which features have been selected, taking the guesswork out of job programming.*

**Unparalleled functionality and flexibility in your networked environment.**



*Document Centre 420/426 with 2,000-sheet High Capacity Feeder and 1,000-sheet Finisher*

- Seamless integration - innovative features like automatic IP addressing, device naming and Ethernet provide simple and automatic installation on your network.
- Remote management made easy — manage from anywhere on the Internet with CentreWare Internet Services. Document Centre internal Web technology gives you immediate information about the device from your favorite web browser.
- Document Centre device management software lets you manage your devices your way: seamlessly, simply and automatically!

Visit [www.xerox.com/supplies](http://www.xerox.com/supplies) for a complete list of available Xerox paper and speciality media.

**Call today.** For more information, call **1-800-ASK-XEROX** or visit us at [www.xerox.com/office](http://www.xerox.com/office).



CONFIGURATIONS	Document Centre DC420/426 DC	Document Centre DC426 ST
<b>Speed</b>	20/26 pages-per minute (ppm)	26 pages-per minute (ppm)
<b>Duty Cycle</b>	Up to 50,000/100,000	Up to 100,000
<b>First-Copy-Out Time</b>	4.7 seconds	
<b>Pre-collation Memory</b>	20 MB RAM + 2.1 GB Hard Disk	64 MB RAM + 4.5 GB Hard Disk
<b>Maximum Resolution</b>	400 x 400 dpi x 8 bit	600 x 600 dpi x 8 bit
<b>Paper Input</b>	50-sheet Duplex Automatic Document Feeder	
<b>Paper Tray Options</b> (selected at time of purchase)	Up to four, 500-sheet user adjustable trays 50-sheet user-adjustable bypass tray 1,000-sheet High Capacity Feeder	
<b>Paper Tray Sizes/Weights</b>	Tray 1: 5.5 x 8.5 in. to 11 x 17 in. / 16 – 24 lb. Tray 2: 8.5 x 11 in. to 11 x 17 in. / 16 – 28 lb. Trays 3-4: 8.5 x 11 in. to 11 x 17 in. / 16 – 24 lb. Bypass Tray : 4 x 6 in. to 11 x 17 in. / 16 – 110 lb.	
<b>Paper Output Options</b>	300-sheet Offsetting Center Tray (standard) 200-sheet Left Catch Tray (standard) 1,000-sheet Finisher with 50-sheet staple capacity 50-sheet Convenience Stapler and Work Surface	
<b>Network Controller</b>	None	<b>Processor:</b> Intel Celeron® 300 MHz <b>Connectivity:</b> Ethernet 100BaseT/10BaseT, 10Base2, 10Base5 via adapter, IEEE1284 Parallel, Wireless Ethernet (IEEE 802.11b) via third-party adapter <b>PDL Support:</b> PCL6 (PCL5e), Adobe PostScript® 3, TIFF and PDF, LCDS, SCS, XES, and IPDS through third-party transforms <b>OS Support:</b> Microsoft Windows® 9x/Me/NT 4.02000/XP, Novell Netware® 4.x/5.x/6, Sun Microsystems Solaris® 2.5.1/2.6+, HP-UX 10.2/11, IBM AIX® 4.2+, Linux Intel (various), Mac OS® 8.x, 9.x, OS X
<b>Special Features</b>	Auto paper select, auto tray switching, booklet creation, 2-up, transparency dividers blank/printed, covers insertion blank/printed, build job programming, stored job programming, job interrupt, bound document copying, sample set, store/recall job programming, inserts, mixed size originals, annotation, electronic auditor for copying and faxing services.	All features of the digital copier, plus: Multi-set printing with send-once/RIP-once/print-many technology, RIP-while-print multitasking, print drivers with custom graphical user interface (GUI), paper selection from the driver by type, embedded Web server for remote control/monitor/setup, job monitoring and control at the device and at the desktop, concurrent scan-while-print, Secure and sample print.
<b>Options/Accessories</b>	Embedded Fax (14.4 Kbps, on-line) with LAN Fax, Network Scanning, Foreign Device Interface, Scan-to-PC Desktop Client Software	

## Unrivaled service and support.

Behind every Xerox product is a large network of customer support that's unrivaled in the industry and available when you need it. Xerox service professionals use leading-edge technologies to keep you up and running. They have direct access to the engineers who designed your product, so you can be confident when you choose Xerox. And genuine Xerox supplies are always easily available.

## Designed to be kind to our planet.

All Document Centre models are environmentally friendly. In support of Xerox leadership goals, these products are designed to use recycled papers and conform to an array of global energy conservation standards. We're working with you to help preserve the planet.

## Total satisfaction guaranteed.

The exclusive Xerox Total Satisfaction Guarantee, recognized as unique in the industry, covers every Document Centre® that has been continuously maintained by Xerox or its authorized representatives under a Xerox warranty or Xerox maintenance agreement.

